

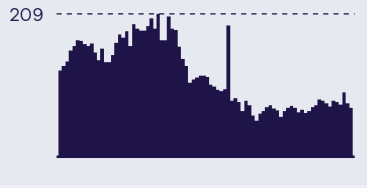
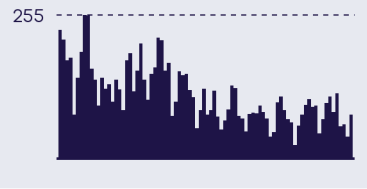

# Victorian COVID-19 Surveillance Report

07 March 2025

**OFFICIAL**

# Epidemiological Summary

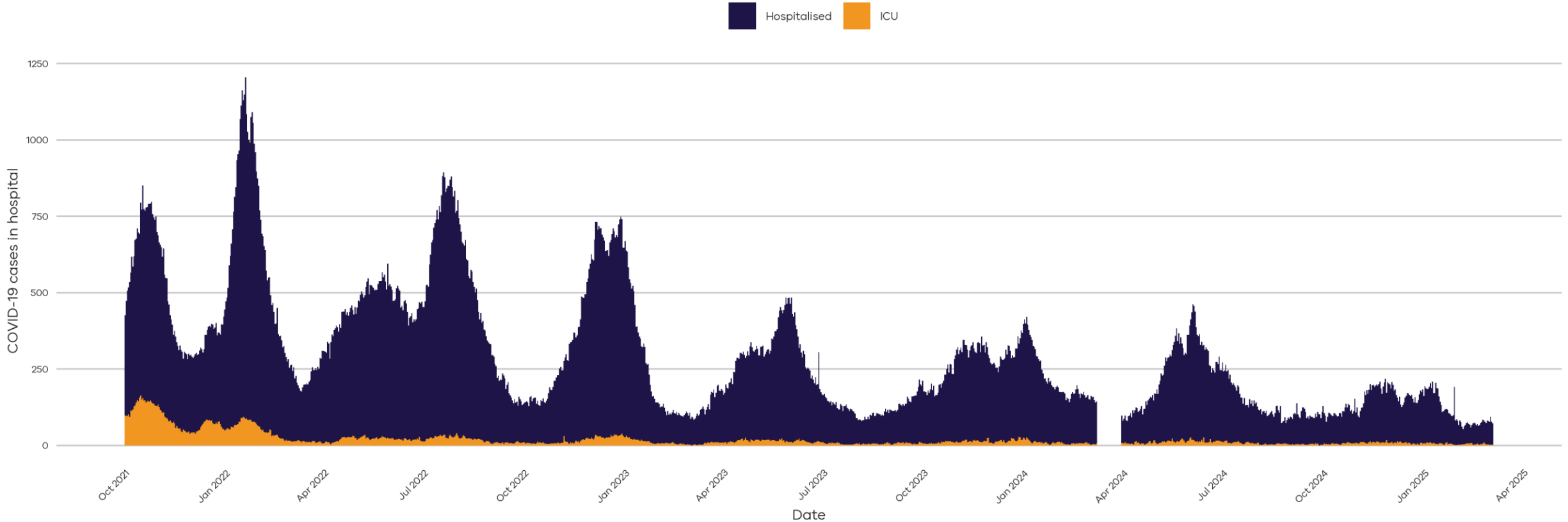
## Current trends indicate decreasing levels of COVID-19 activity in Victoria

Daily counts last 12 weeks	
	<p><b>The number of people in hospital with COVID-19 has increased this week.</b> The 7-day average is 80 (week ending 04 March), compared to 75 last week.</p> <p><b>The 7-day average of ICU patients has decreased this week (6 to 3).</b></p>
	<p><b>COVID-19 notifications decreased this week.</b> A total of 547 cases (PCR-confirmed) were notified in the most recent week (ending 04 March), compared to 603 the week prior.</p> <p>11,649 PCR tests were completed last week, similar to the week prior with 11,502 tests.</p> <p>4.6% of tests returned a positive SARS-CoV-2 result, a decrease from 5.3% the previous week.</p>
	<p><b>Globally, descendants of JN.1 including KP.3.1.1 and XEC are the most prevalent variants.</b> Current Variants Under Monitoring (VUM) designated by WHO include <b>KP.2, KP.3, KP.3.1.1, JN.1.18, LB.1, XEC and LP.8.1.</b> LP.8.1 was most recently designated a VUM on 24 January 2025.</p> <p><b>In Australia, XEC and KP.3</b> sublineages comprise the majority of variants identified. <b>XEC has continued to increase in abundance.</b></p>

National reporting of deaths due to COVID-19, influenza and RSV is available from the [ABS](https://www.abs.gov.au/articles/deaths-due-covid-19-influenza-and-rsv-australia-2022-november-2024)  
<<https://www.abs.gov.au/articles/deaths-due-covid-19-influenza-and-rsv-australia-2022-november-2024>>

# COVID-19 Hospitalisations

Daily COVID-19 cases in hospital and ICU  
Data until 04 March 2025

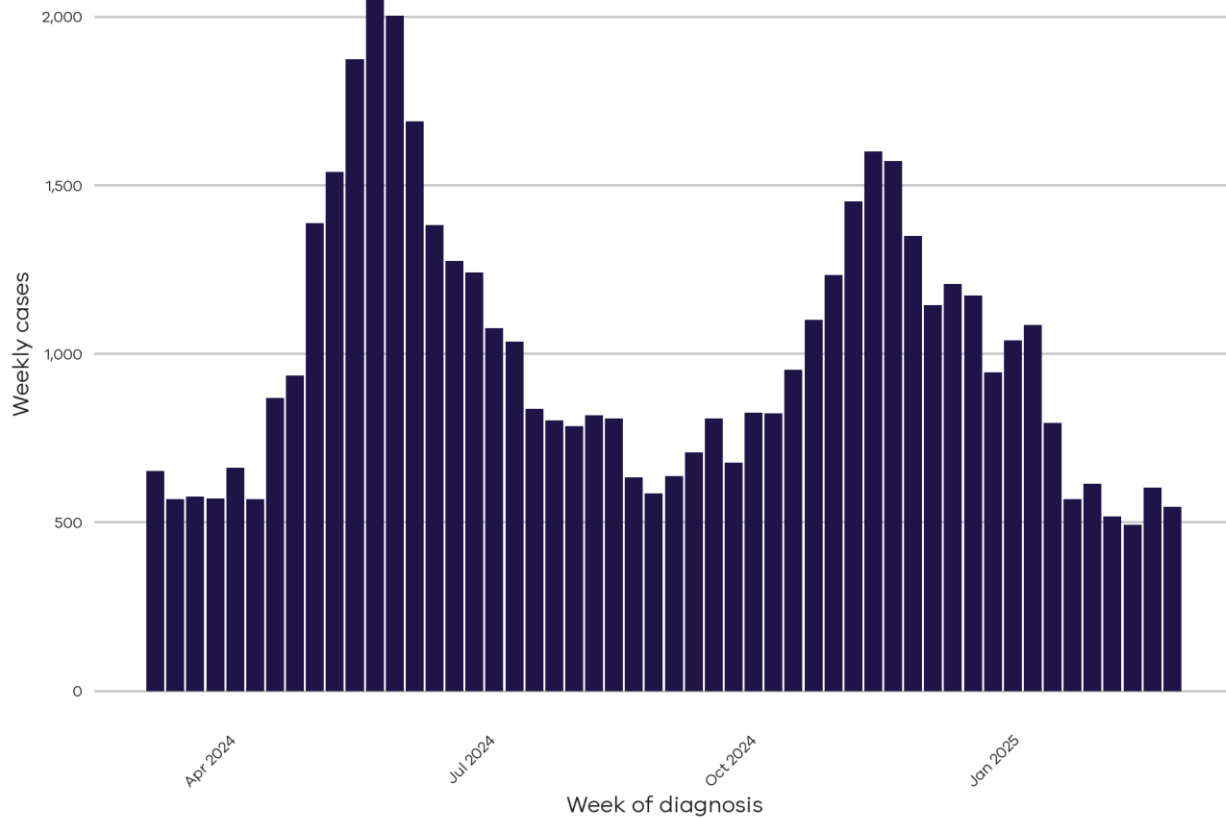


Data source: Critical Health Resource Information System (CHRIS)

This graph shows data back to September 2021 when hospitalisations were increasing during the Delta variant wave. Hospitalisations represent the number of COVID-19 positive patients in hospital on a given day. Please note that COVID-19 hospitalisation data from CHRIS is unavailable for dates between 8 March 2024 and 30 March 2024

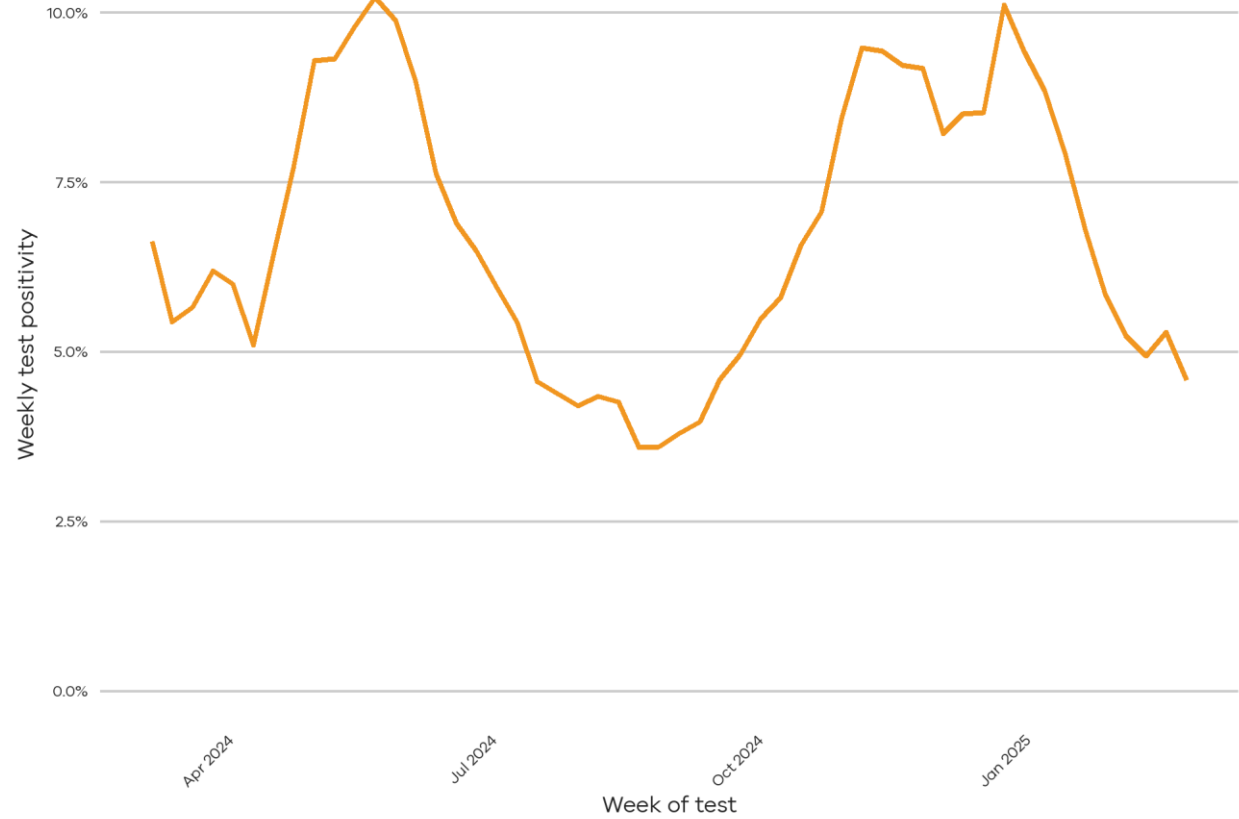
# COVID-19 Cases and Testing

**COVID-19 notifications (PCR-confirmed) by week in the past year**  
Data until 04 March 2025



Data source: TREVI/PHESS

**COVID-19 test positivity by week in the past year**  
Data until 04 March 2025



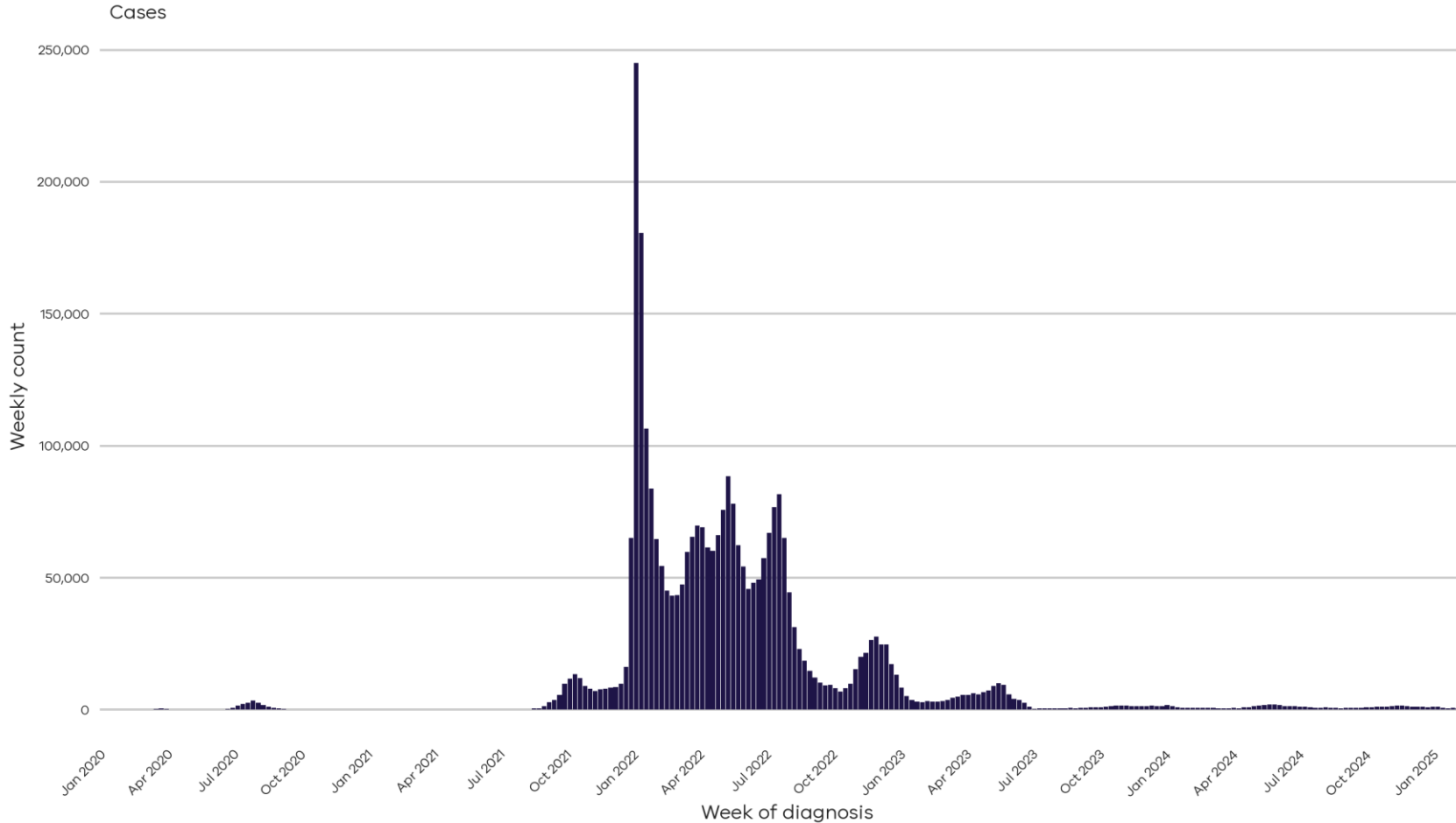
Data source: TREVI/PHESS

Only confirmed notifications diagnosed by PCR are included. Rapid Antigen Test (RAT) results are no longer collected by the Department of Health.

# Appendix

# COVID-19 Historical Data & Definitions

**Epidemic curve of weekly COVID-19 metrics**  
Data until 04 March 2025



Data source: TREVI/PHESS

**COVID-19 Cases** are reported according to the definitions given in the Coronavirus (COVID-19) CDNA National Guidelines for Public Health Units. Where multiple positive test results are received for the same person within 35 days of the initial test result they are counted as a single case.

**As of 30 June 2023, probable cases are not collected by the Victorian Department of Health, case counts since this date reflect cases with a positive PCR test only.** Rapid Antigen Testing remains an important tool for individuals to access treatment and protect their community.

Changes in case numbers may be indicative of trends but they are a small subset of the total COVID-19 infections in Victoria.

**COVID-19 Hospitalisations** represent the number of active COVID-19 patients in hospital on a given day. This is reported by Victorian hospitals with an ICU to the Critical Health Resource Information Service (CHRIS) as daily aggregated data.

**Test positivity** is the percentage of SARS-CoV-2 tests with SARS-CoV-2 virus detected.