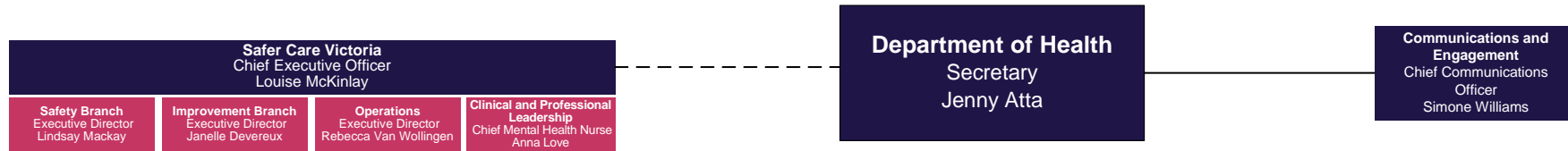


# Department of Health – Organisational Structure

## March 2025



Community and Public Health Deputy Secretary Zoe Wainer	Hospitals and Health Services Deputy Secretary Jodie Geissler	Mental Health and Wellbeing Deputy Secretary Katherine Whetton Pam Anders (A)	Aboriginal Health and Wellbeing Chief Aboriginal Health Adviser Nicole McCartney	Finance and Support Deputy Secretary Daen Dorazio Catherine Rooney (A)	eHealth Deputy Secretary Lance Emerson	System Planning Deputy Secretary Nicole Brady	People, Operations, Legal and Regulation Deputy Secretary Jacinda de Witts	Hospitals Victoria Chief Executive Officer Siva Sivarajah
<b>Chief Health Officer</b> Tarun Weeramanthri	<b>Performance and Commissioning</b> Senior Executive Director Ryan Heath Maria Perera (A)	<b>Chief Psychiatrist</b> Sophie Adams	<b>Policy and Strategy</b> Deputy Chief Aboriginal Health Adviser Craig Taylor	<b>Common Corporate Support</b> Executive Director Gordon Caris	<b>Enterprise Technology</b> Chief Information Officer Ray Baird Ryan Ruthven (A)	<b>Intergovernmental Relations</b> Executive Director Erin Taylor	<b>Legal</b> General Counsel Jennifer DeJong	<b>Deputy Chief Executive Officer</b> Phil Ames
<b>Communicable Disease</b> Deputy Chief Health Officer Christian McGrath	<b>North-East, South-East Health Services and Statewide Performance</b> Executive Director Debra Sudano	<b>Transformation</b> Senior Executive Director Pam Anders	<b>Aboriginal Priority Projects and Reform</b> Deputy Chief Aboriginal Health Adviser Jon Kanoa	<b>Finance</b> Chief Finance Officer Karen Olesnicky	<b>Digital Health</b> Chief Digital Health Officer Sharon Hakkennes	<b>Reform, Planning and Design</b> Executive Director Phuong Pham	<b>Public Law and Legislation</b> Executive Director Sharon Perera	<b>Taskforce and Insights</b> Executive Director Christy Milella
<b>Environmental Health</b> Deputy Chief Health Officer Evelyn Wong	<b>Western Health Services and Aged Care</b> Executive Director Janelle Hearn	<b>Governance and Accountability</b> Executive Director Lauren Costello		<b>Financial Governance and Control</b> Deputy Chief Finance Officer Beth Gubbins	<b>Strategy Cybersecurity and Assurance</b> Chief eHealth Strategy Officer Emily Mailes	<b>Strategic Policy and Evidence</b> Executive Director Sarah Nesbitt / Stephanie Milione	<b>Health Regulator</b> Executive Director Olivia Goodman	<b>Health Service Financial Performance and Capability</b> Executive Director Mark Grigg
<b>Prevention and Population</b> Deputy Chief Health Officer David Lister	<b>Ambulance Emergency Care and Access</b> Executive Director Maria Perera Meagan Thompson (A)	<b>System Design and Planning</b> Executive Director Meagan Thompson Jane Poxon (A)			<b>Analytics</b> Chief Analytics Officer Kate Lucas	<b>Health System and Asset Planning</b> Executive Director Esther Warren	<b>Audit, Risk and Resilience</b> Chief Audit and Risk Officer Ben Skinner	<b>Health Sector Funding, Productivity and Budgets</b> Senior Executive Director Catherine Rooney Bryce Stevens (A)
<b>Primary and Community Health</b> Executive Director Louise Galloway	<b>Timely Emergency Care</b> Chief Clinical Adviser Dean Pritchard	<b>Lived Experience</b> Executive Director Fiona Patterson (A)					<b>People</b> Executive Director Elise Tuffy	<b>Funding Costing and Pricing</b> Executive Director Andrew Haywood
<b>Population and Women's Health</b> Executive Director Kym Arthur	<b>Operational Support and Improvement Policy</b> Senior Executive Director Naomi Bromley	<b>Prevention Policy and First Peoples</b> Executive Director Monica Kelly					<b>Organisational Effectiveness</b> Executive Director Julie Walsh	
<b>Community and Public Health</b> Senior Executive Director Adele Mollo	<b>Workforce Strategy and Planning</b> Executive Director Kate Matson	<b>Reform Implementation</b> Executive Director VACANT						
<b>Emergency Management</b> Executive Director Kate Crawford	<b>Governance and Statewide Programs</b> Executive Director Nicola Farray	<b>Performance and Commissioning</b> Executive Director Mia Bromley						
<b>Protection, Practice and Response</b> Executive Director Jen Bliss	<b>Planned Care Recovery and Reform</b> Executive Director Aleco Lazaridis (A)							
<b>Public Health Network and Programs</b> Executive Director Bridie O'Donnell	<b>Surgical Recovery and Reform</b> Chief Surgical Adviser Ben Thomson							